



XRPH AI Ecosystem Overview

Strategic Ecosystem Participation

Institutional access to the XRPH AI healthcare ecosystem

www.xrphealthcare.ai

EXECUTIVE SUMMARY

XRPH AI is a mobile-first AI healthcare platform designed to expand global healthcare accessibility through intelligent digital infrastructure.

XRPH AI combines artificial intelligence with a scalable digital infrastructure designed to support global healthcare access.

The platform integrates:

- AI healthcare insights
- Prescription savings infrastructure
- A global participation layer

XRPH AI operates with HIPAA-grade data protection standards and is structured for global expansion.

A limited Strategic Ecosystem Participation round will support the next phase of growth.



TABLE OF CONTENTS

Platform

Executive Summary	1
Global Healthcare Opportunity	3
XRPH AI Overview	4
Core Platform Capabilities	5
Platform Advantage	6
XRPH AI Ecosystem	7

Token & Ecosystem

\$XRPHAI Token Structure	8
\$XRPHAI Participation Layer	9
Strategic Ecosystem Participation	10
Strategic Capital Deployment	11

Governance & Expansion

Platform Expansion	12
Ecosystem Partner Onboarding	13
Regulatory & Legal Framework	14
Independent Legal Opinion	15
Intellectual Property & Trademarks	16
Strategic Ecosystem Participation	17



GLOBAL HEALTHCARE OPPORTUNITY

Healthcare is a **\$10 trillion** global industry undergoing rapid digital transformation.

AI, mobile infrastructure, and blockchain-enabled systems are reshaping healthcare access at scale.

XRPH AI operates at the intersection of:

- AI healthcare demand
- Mobile-first delivery
- Global digital infrastructure
- Blockchain-enabled participation



XRPH AI OVERVIEW



XRPH AI combines:

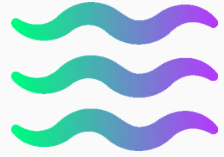
- AI Healthcare Platform
- Prescription Savings Infrastructure
- Global Accessibility Layer

Together, these create a unified system designed to expand healthcare access globally.



CORE PLATFORM CAPABILITIES

Core XRPH AI platform capabilities:



CalmXRPH™

Guided breathing and meditation



AI Healthcare Assistant

Multilingual health guidance



AI Symptom Scan

AI image symptom analysis



FemCare

Menstrual cycle insights



Prescription Savings Network

Discounted medication access



XRPH Wallet Integration

XRPH wallet connectivity



Medicine Verification

Counterfeit medicine detection



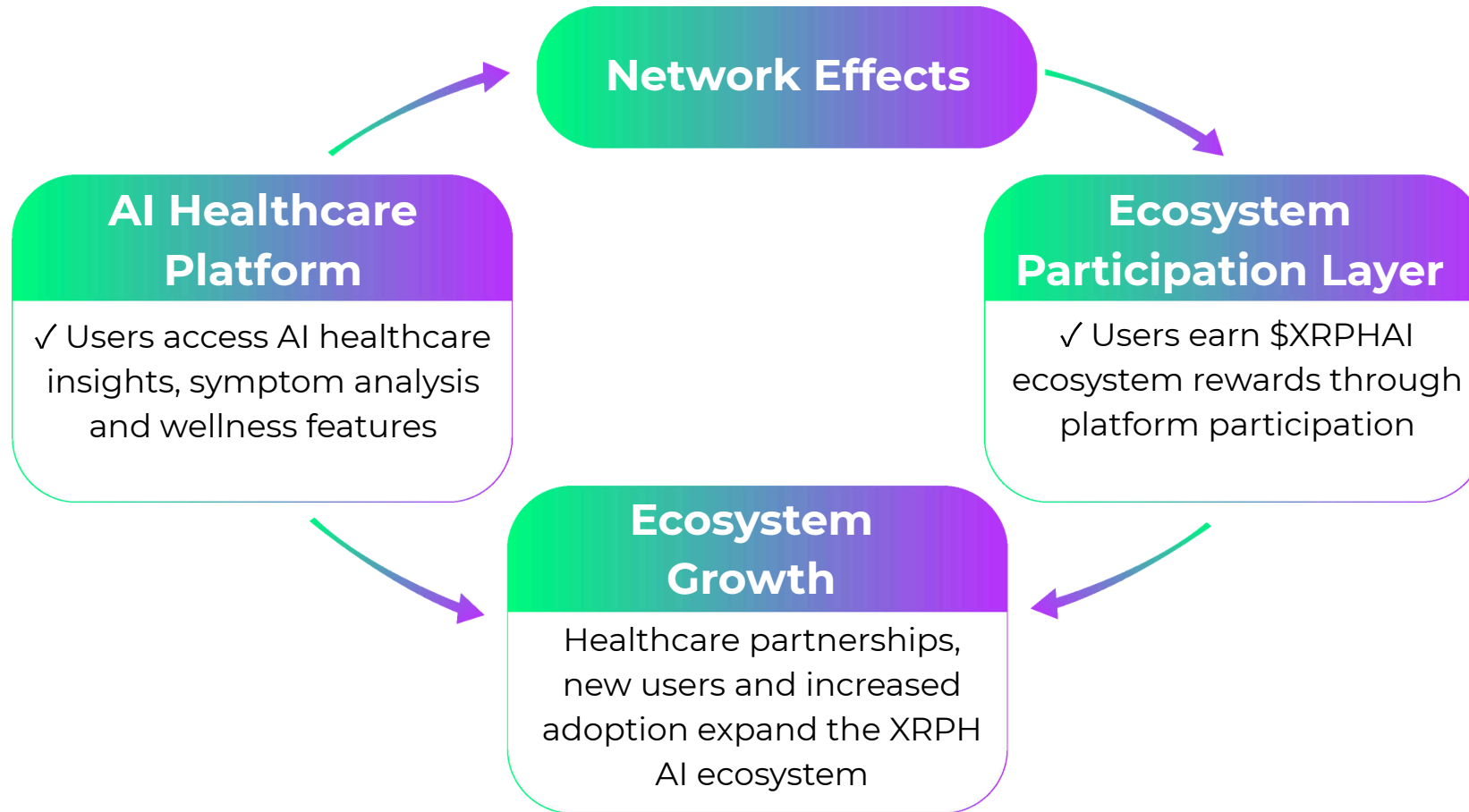
Prescription Scanner

Reads handwritten prescriptions

Core modules supporting global healthcare accessibility.



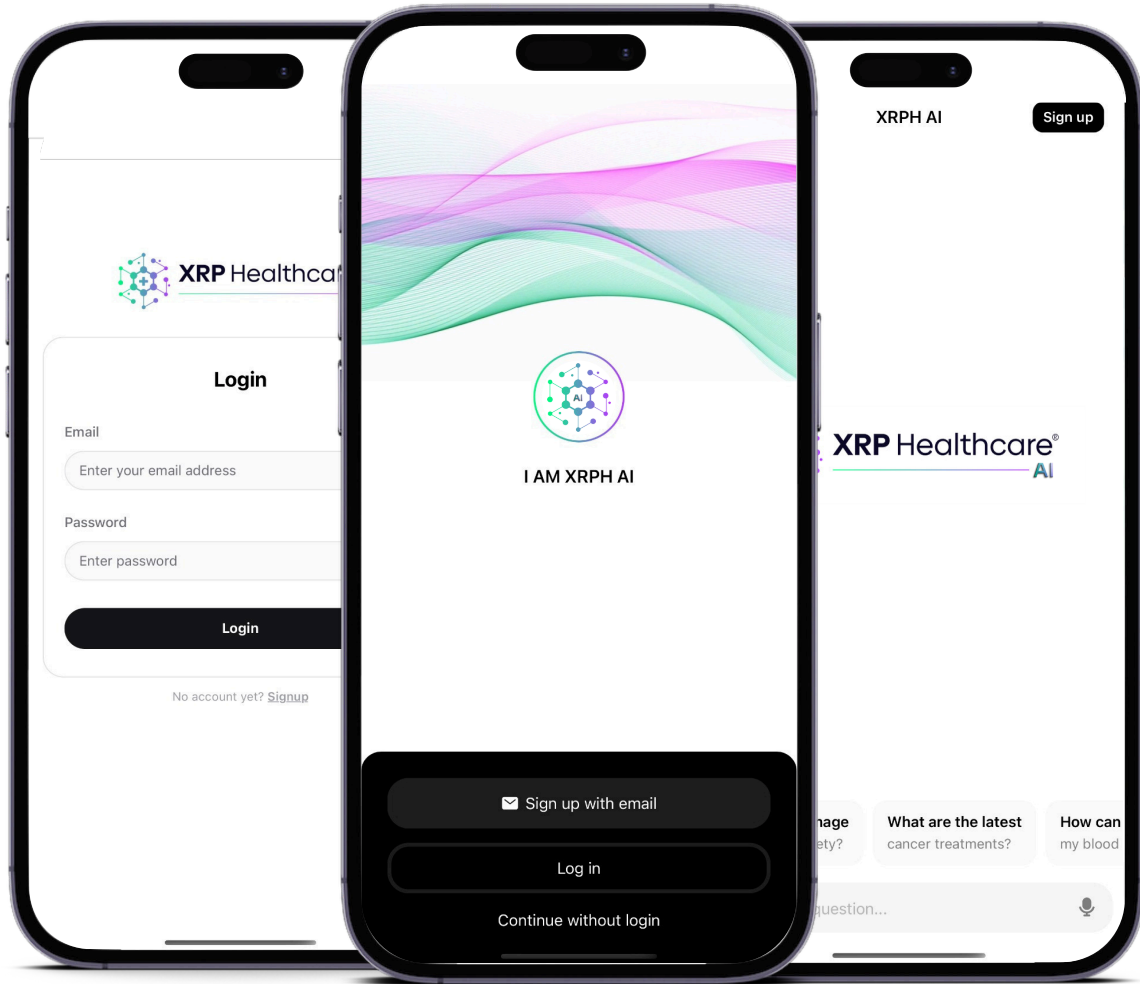
■ PLATFORM ADVANTAGE



XRPH AI creates a self-reinforcing healthcare ecosystem where user participation, healthcare access and token incentives drive global platform growth.



XRPH AI ECOSYSTEM

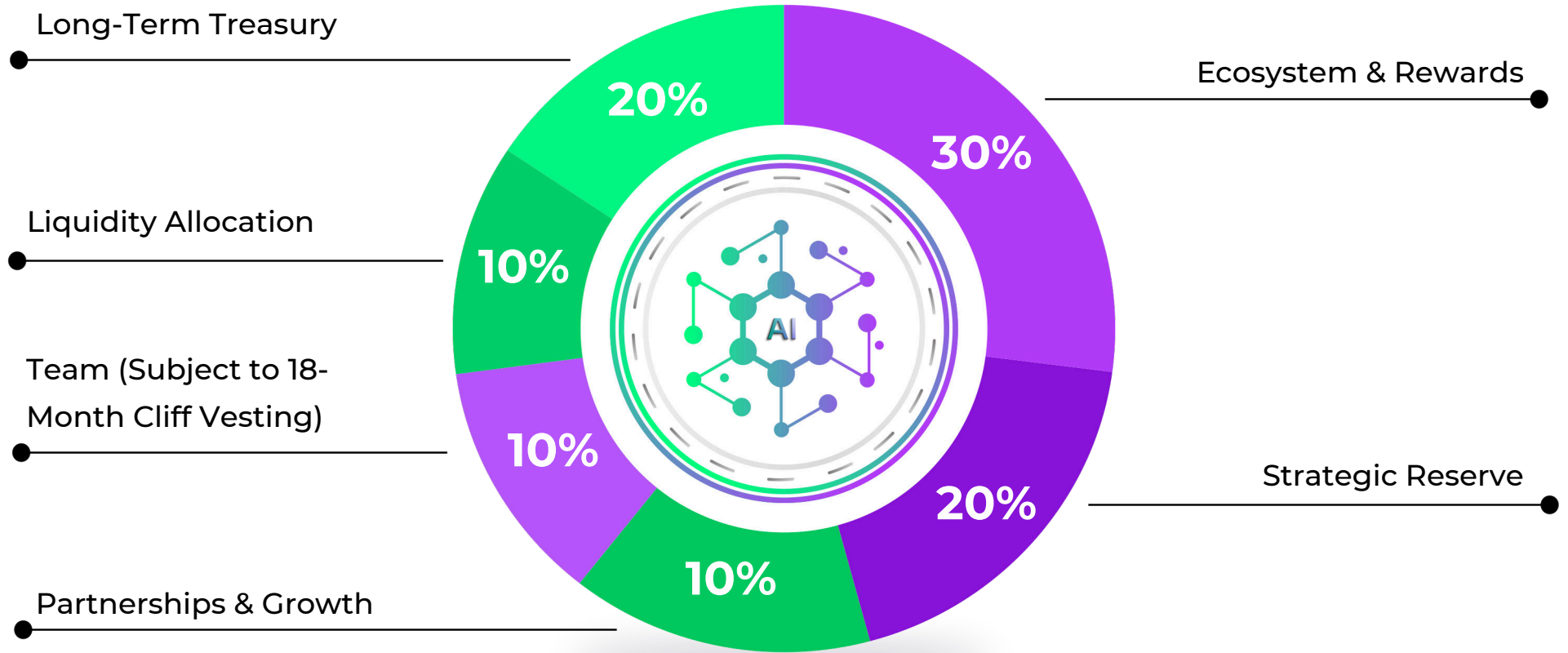


XRPH AI ecosystem growth is driven by:

- Platform expansion
- Participation growth
- Healthcare partnerships
- Exchange accessibility
- Global adoption



\$XRPHAI TOKEN STRUCTURE



Total Supply: 1,000,000,000 \$XRPHAI

Strategic ecosystem allocations support platform expansion and long-term development.



\$XRPHAI Participation Layer

The \$XRPHAI token functions as the engagement and participation layer within the XRPH AI ecosystem.

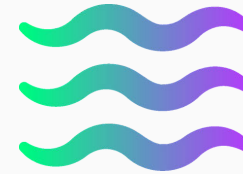
Utility within the platform includes:



AI Health Assessment
rewards



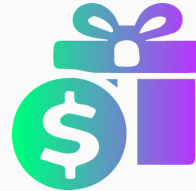
Image symptom
scan rewards



CalmXRPH wellness
engagement



Prescription savings
participation



Referral
incentives



Ecosystem
participation rewards



STRATEGIC ECOSYSTEM PARTICIPATION

Limited allocations supporting XRP Healthcare's next expansion phase.

Institutional Strategic Partners

Strategic participation for long-term ecosystem and healthcare partners.

From \$1M+

- Equity participation
- Limited ecosystem token alignment
- Strategic collaboration potential
- Early ecosystem positioning

Strategic Ecosystem Participants

Early-stage participation aligned with XRP Healthcare's growth roadmap.

From \$250K+

- Equity participation
- Limited ecosystem token alignment
- Growth milestone exposure
- Limited allocations

Accepted in:

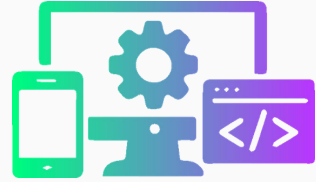


Participation supports XRPH AI App growth, XRPH Wallet expansion, exchange growth, partnerships, and ecosystem scaling.



ECOSYSTEM CAPITAL DEPLOYMENT

Strategic participation supports:



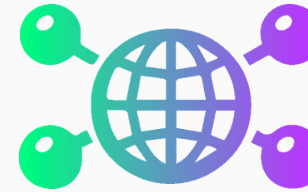
Platform Development
AI infrastructure expansion



Exchange liquidity expansion
Token liquidity & access



Partnership Growth
Healthcare partnerships



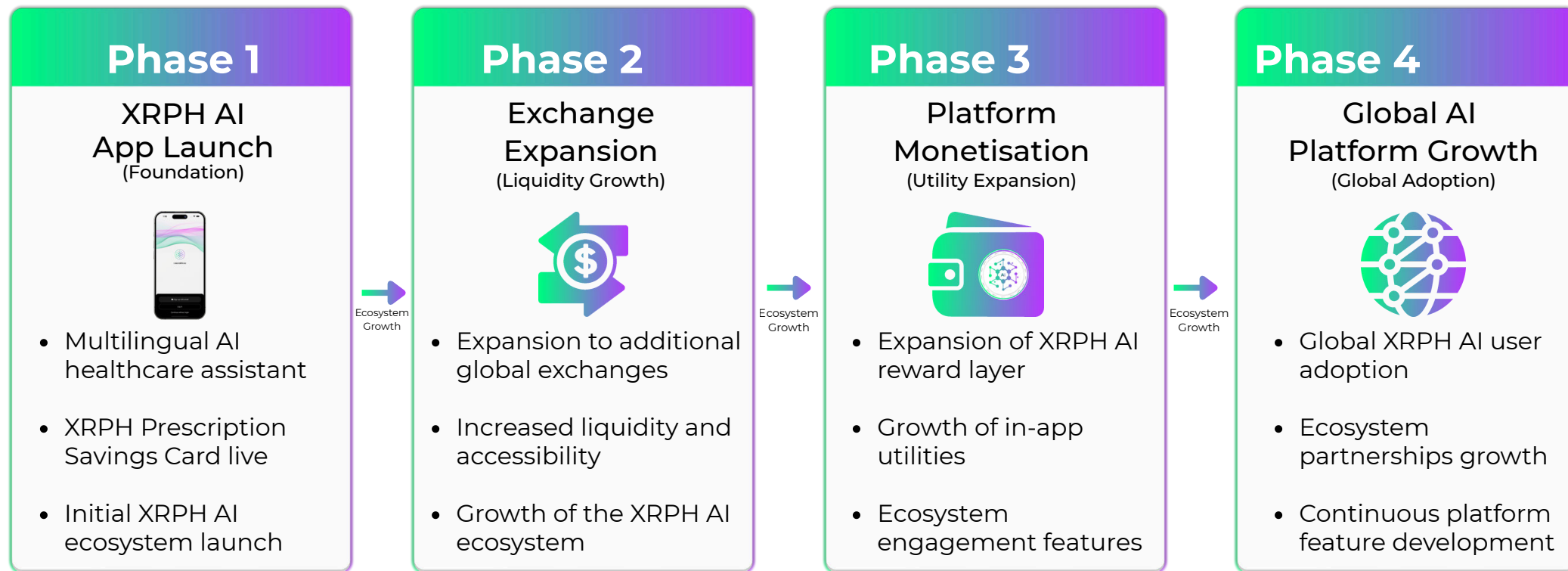
Global ecosystem expansion
User adoption & distribution

Strategic ecosystem participation supports the next phase of XRPH AI platform expansion.



PLATFORM EXPANSION

Expanding the XRPH AI ecosystem through platform development, exchange accessibility and global adoption.



XRPH AI platform expansion focuses on global accessibility, exchange growth and ecosystem utility development.



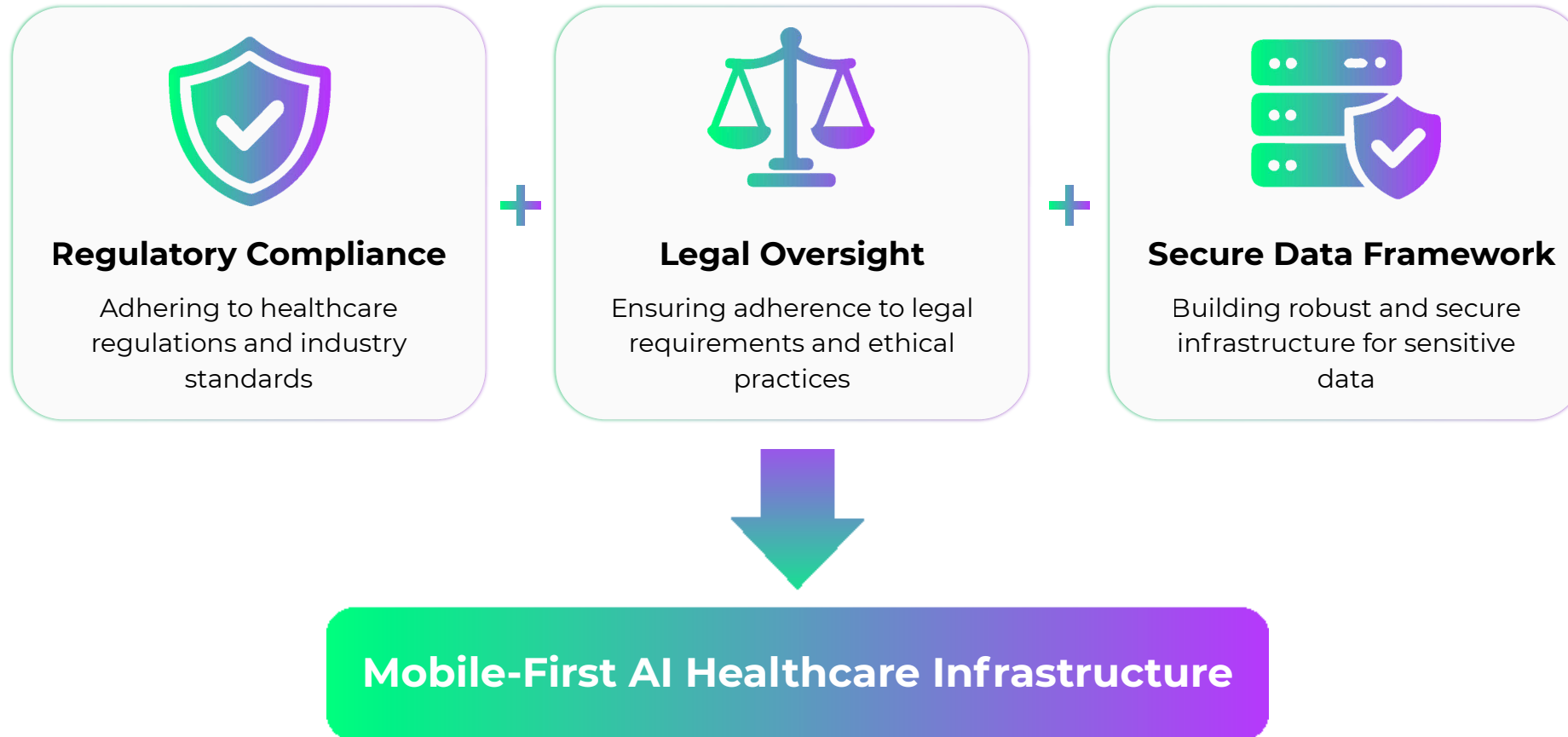
ECOSYSTEM PARTNER ONBOARDING



Strategic ecosystem partners follow a structured onboarding process designed for long-term platform alignment.



REGULATORY & LEGAL FRAMEWORK



The XRPH AI ecosystem operates within structured legal and regulatory frameworks supporting platform integrity and global expansion.



INDEPENDENT LEGAL OPINION

Independent legal counsel has reviewed the structure of the \$XRPHAI token and its role within the XRPH AI ecosystem. The full legal opinion is available publicly.



- Independent legal counsel reviewed the \$XRPHAI token structure
- Token designed as a utility-based participation layer within the XRPH AI ecosystem
- XRP Healthcare LLC (token issuer and owner)
- XRP Healthcare M&A Holding Inc. (platform operator)

[View Independent Legal Opinion](#)



INTELLECTUAL PROPERTY & TRADEMARKS



The XRP Healthcare® ecosystem is supported by registered trademarks and intellectual property across multiple jurisdictions.

The XRP Healthcare® trademark forms the foundation of the ecosystem's infrastructure identity, supporting licensing, governance, and global commercial deployment.

This framework strengthens long-term protection, scalability, and brand integrity.



STRATEGIC GROWTH PARTICIPATION

A limited capital raise supporting XRPH AI platform expansion, exchange listings, and global user growth.

Participation

- Strategic investors and capital partners
- Qualified participants (\$250K – \$1M+)

Structure

- Total raise: up to **\$3M**
- Equity allocation: up to 15% (Dubai entity)
- Structured investment with phased deployment

Next Step

Participation is now open following XRPH AI launch and early market validation.



Allocations are limited and subject to review.

Apply for Strategic Participation

Limited allocation. Qualified participants only.



www.xrphhealthcare.ai